



OFFICE OF

*Evangelization
+ Discipleship*

Equipping Catholic Leaders

Catholic Relief Services: Global Water, Sanitization, and Hygiene (WASH)

Diocese of Charlotte

March 22, 2024

Deacon Josh Klickman, Diocese of Raleigh, Coordinator for Human Life and Dignity

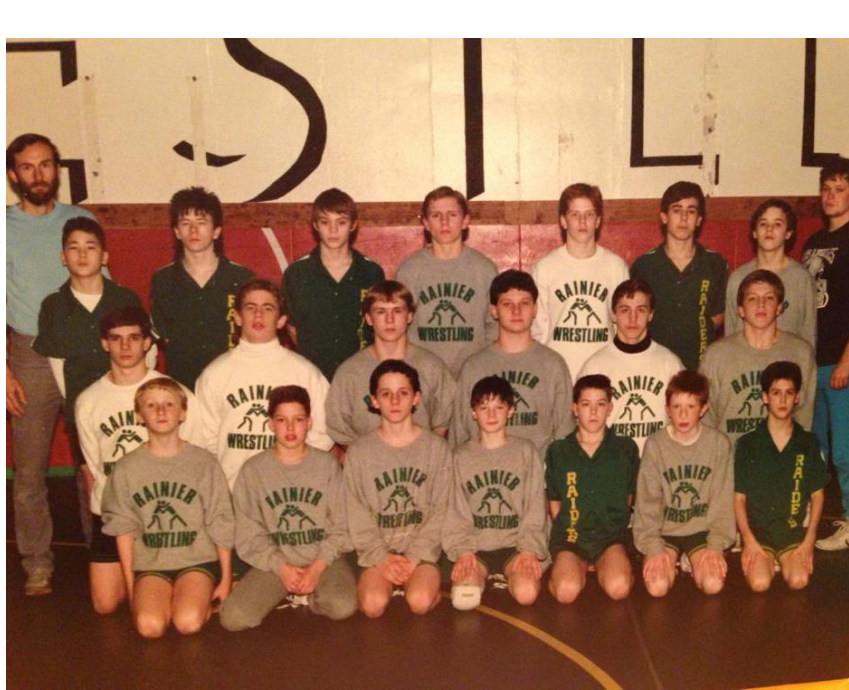
CRS Global Fellow, CRS State Delegation Lead

Ruth



Overview

- Introduction
- Kerygma & Theology 101
- Why Do Christians Perform Works of Charity and Justice?
- Overview of CRS
- World Water Crisis
- WASH in Zambia
- What Can you Do?
- Questions



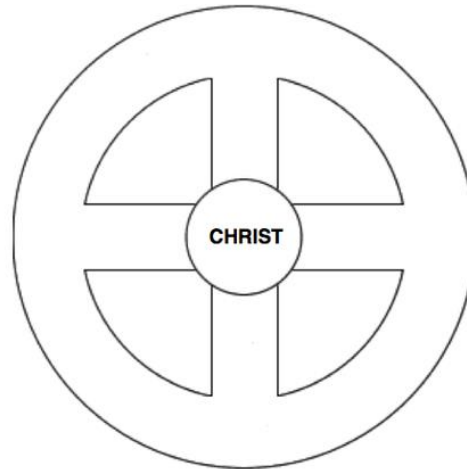
Kerygma (Proclamation): The Central Message Of The Gospel

Creation (love), Corruption (fall), Redemption (**kerygma**), Response (...)

For God so loved the world that he gave his only Son, that whoever believes in him should not perish but have eternal life.

John 3:16

**The Mission of
the Church is
to Evangelize!**



Jesus is at the center of the Church; love is essential to creation.
Love, service, etc...these all require a separate person.
Love cannot exist on its own, love isn't love until you give it away.



What is the consequence of the Kerygma?

“Share your bread with the hungry, shelter the oppressed and the homeless.” Is 58:7

“Whatever you did for the least of these you did it unto me.” Matthew 25:40

“If someone who has worldly means sees a brother in need and refuses him compassion, how can the love of God remain in him?” 1 Jn 3:17

“But let our people, too, learn to devote themselves to good works to supply urgent needs.” Titus 3:14

- These works begin in the local parish, then extend outward
- Catholic Charities, St Vincent De Paul, Schools, Hospitals, Service Projects
- Political Involvement, State Catholic Conferences

Charity

Justice



Caritas promotes greater coordination, communication and cooperation all over the world.

National Caritas organizations are autonomous under their bishops, but they combine as part of the Caritas Internationalis confederation, which is a body of the Universal Church.

- 1. Catholic Charities USA (USA)**
- 2. Catholic Relief Services (USA)**
3. Development and Peace (Canada)

...have many tens of thousands of individual members and provide some of the largest emergency response, development, advocacy and other programs to the united work of Caritas Internationalis.

They work together with the Caritas Latin America and Caribbean region on common initiatives such as migration, peacebuilding and social and economic justice.



Zambian Delegation and CRS Zambia

- By, with, through...agents of their own destiny and ecumenical.
- Catholic





Catholic Identity

"We ask for water; they give us [tear] gas!"

Cochabamba, Bolivia.
Graffiti during 2000 "Water Revolt"

Water and Conflict

Ranges from

- Local groups
 - Tribal tensions over a water point
 - Dam construction
- National competition
 - Hostilities from upstream vs downstream states
 - Inadequate or contradictory regulations for competing sectors, from farming, industry, environmental protection and municipal water supplies.



GERRIGO | Photo by Jason Gehring/CRS, 2006.

The daily "structural" violence inflicted upon the world's poor because they lack access to improved water—especially women and children—is represented by this small boy sent out long distances daily to fetch water in Anchallani, Bolivia.

Water as Target, Toll, and Goal in Conflict

Military Target - 1943: British Royal Air Force bombed dams in Germany at Möhne Dam, killed 1,200 people and destroyed all downstream dams for 50 km.

2001: U.S. forces bombed the hydroelectric facility at Kajaki Dam in Afghanistan in order to cut off electricity to the city of Kandahar.

Military Tool - 1992: Bosnian Serbs took control of water valves regulating flows from wells that provided more than 80% of the water to the besieged city of Sarajevo.

Political Tool - 1999: In Puerto Rico, protesters blocked the Blanco River water intake to navy base, following chronic water shortages in neighboring towns—a non-violent conflict.

Source of Development Dispute - 2006: At least 40 people died in Kenya and Ethiopia in continuing clashes over water, livestock, and grazing land.

2007: In India, thousands of farmers breached security and stormed the area of the Hirakud dam to protest allocation of water to industry.

Facts and Best Practices

- [In 2015](#), about 1/3 of the global population did not have access to safe drinking water, 2/3 did not have access to sanitation.
- Account for 3.3% of deaths, about 2 million preventable deaths, 13% of children under 5 are attributed to inadequate WASH.
- [443 million](#) school days lost to water-related illness
- Large-scale productivity loss





Water, Sanitation, and Hygiene (WASH)

- What? CRS delivers comprehensive and integrated climate resilient WASH packages in an equitable way to respond to immediate and long-term needs of the people we serve.
- How? Through collaboration with local partners to prioritize the needs of the most vulnerable, including women and people with disabilities.





Preserving Resources

- Youth Climate Champions Project
- Mostly funded by local parish, Zambian Government, and organizations and CRS (Rice Bowl)

Diversified Crops

- Farm Bill
- Mary Tembo

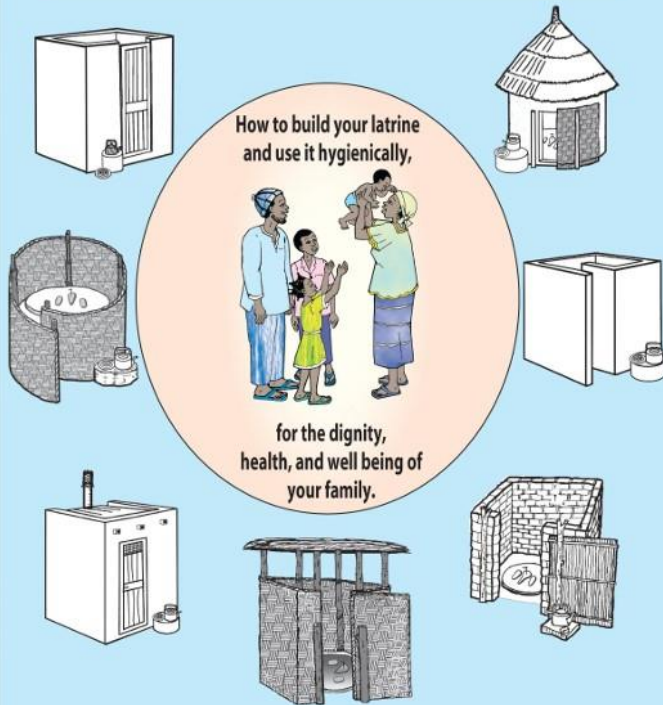




The Global Water Initiative
A Partnership Enabled by the Howard G. Buffett Foundation

GWI WEST AFRICA

A PRACTICAL GUIDE FOR BUILDING A SIMPLE PIT LATRINE



This guide belongs to _____ from _____ (locality)

Why build a latrine? Laurent and his family give their reasons.

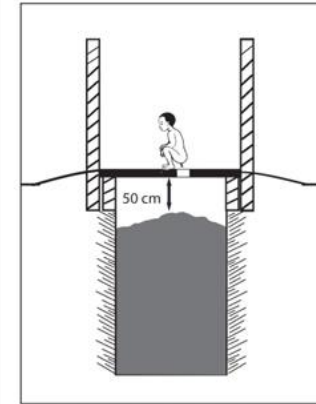
It is difficult to have to go far to defecate, particularly when sick.



When I have a visitor at home, I am embarrassed to have no latrine for him to use.



It is shameful when someone sees you relieving oneself, and you could also be assaulted.



The second pit must be dug when the faeces in the first pit reaches to 50 cm below the ground level. The second pit must be located at least 3 m from the first one.



You must move the slab from the first pit to the second pit, and then fill in the first pit.



Before re-using the slab, you need to make sure that it has not been damaged. Also, make sure you wash your hands with soap or ash after handling the slab.

Meeting with District Administration



WASH Programs





How to Help

- Give

Your gift enables CRS to help refugees and other displaced people with basic necessities like clean water, medical assistance, shelter and food—especially critical now as the global hunger crisis worsens.



- [Advocate](#)

Your voice is an important tool for supporting our displaced global family members. Email your members of Congress to advocate assistance for refugees and to address the root causes of forced displacement.



Closing

- Introduction
- Kerygma & Theology 101
- Why Do Christians Perform Works of Charity and Justice?
- Overview of CRS
- World Water Crisis
- WASH in Zambia
- What Can you Do?
- Questions

Questions?

There are a couple of great videos on the CRS YouTube page that are shorter and wonderful:

- Impact Knows No Bounds/WASH (1 minute):
<https://www.youtube.com/watch?v=3HutBXIGP8Q>
- WASH in Ethiopia (4 minutes):
<https://www.youtube.com/watch?v=SVThRGDn21M>
- Building Healthy Communities in South Sudan (6 minutes):
<https://www.youtube.com/watch?v=cimSIpGyBkM>